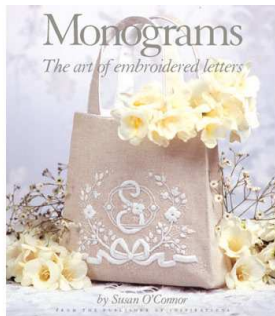


Hello everyone! (feel free to forward this to your friends!)

Happy End of Summer!

August is here, and for me, that signals the 5 week process of starting back to school. First one back starts August 17th and the last one starts September 24th, with 2 in between. We go through the same thing when they get out of school (May 22 through June 20), so we really only have about 8 weeks of summer! Any way, fall is just around the corner, which brings back to school sewing, along with the thoughts of what wonderful outfit to make for Christmas?! I have some beautiful velveteen and silk dupioni to choose from. I also have some new fabrics added to my Fabric Closet (great buys LA's garment district). Dallas and the SAGA convention are right around the corner, too, and I'll be seeing many of you there! At the end of this newsletter I talk about fitting and why things don't!



Susan O'Connor's book [Monograms – The Art of Embroidered Letters](#) is a sell-out success! All of the US inventory was sold out (I was lucky enough to have them bring me some copies when I was in TX, and of course they were sent out as soon as I got them), but the re-orders have just arrived! For anyone who missed this book the first time around, it is incredible! Beautiful as well as instructive. I just received my re-order so I have stock on hand. They are **\$35**, for those of you who would like a copy.

I now carry..... [Carolyn's Beauty Pins](#)



Perfect for special occasion dresses! These beauty pins are gold plated and [engravable](#)! You can put a birth date, christening date, etc., to mark a special occasion. They are \$10 each (\$20 for a card of 2). August Special **\$17.00** a pair

*****I have just received a notice from the **DOVO** Company in Germany (think luscious scissors) that their prices will be going up effective September 1st. I plan on making a final order at their current prices on August 28th. If you have been thinking about treating yourself to a pair of these wonderful scissors, now is your chance, before the prices go up!

August Special Order 2 or more pair of DOVO scissors and receive 10% off your scissor total!

I carry the following DOVO scissors:

1 nub	2 nub	black embroidery	gold scollaped handle emb
5 inch	6 inch	7 inch	silver “ “ “
5 inc leftie	6 inch leftie	7 inch leftie	round nose emb scissors
3 pc set with case	3 pc anniv set / case		Pinking shears
3 ½ inch shear			

You can see these on my website, along with prices at www.vaune.com

** I can also order scissors for cutting hair. If you are interested in these, let me know and I can send pictures.**



Another new notion that I now have available is the sit-upon hoop! For those of you who have taken classes from me, you know that I do most of stitching ‘over the hand’. I learned this technique in Madeira when I traveled with Julia Golson to take lessons at the Imperial Bordados, and then this was reinforced when I traveled returned. There are a few times when I really like to use both of my hands and the sit upon hoop

makes this exceptionally easy to do! At the Royal School of Needlework in England, this is also the type of hoop they use, enabling you to stitch from the top and the bottom of the fabric.

These hoops are made from a beautiful beech wood in Germany. The Sit Upon comes with a 7 ½ inch hoop. A 6 inch and 8 ½ inch hoops are also available.

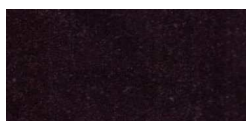
	Reg. \$63,	August Special	\$50
6 ½ inch hoop on a stick	Reg. \$32		\$30
8 /2 inch hoop on a stick	Reg. \$36		\$33

Vaune's Fabric Closet

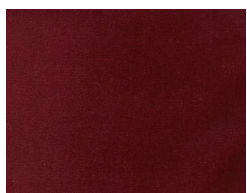
I took a fun trip down to the garment district today with my partner in crime, Lisa Shephard. We found some wonderful new fabrics that are going into the Vaune's Fabric Closet section of my website. Of course, I will give you first chance on these great fabrics, before I post them on the website.

Cotton Velveteen - \$14.00 / yard Perfect for Christmas!

I have Black, Burgundy and a wonderful Chocolate Brown, all 45 inches wide, and an elegant Royal Blue that is 54 inches wide



Black



Burgandy



Brown



Royal Blue

Silks All silks are \$14.00/yd

45 in Dupioni
Mauve Stripe



54 in Black
Silk Satin



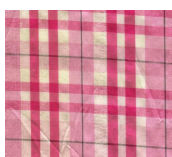
54 in Purple
Silk Shantung



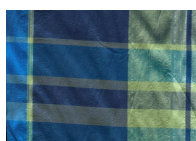
54 in Pink Silk
Taffeta



54 in Plaid
white/ pink



54 in Plaid
blue/moss green



54 in Dupioni
Plum



45 in Plaid
Blu/Gr/Silver

request picture

Cottons - All cottons are \$8.00 /yd

54 in Lawn
Pink Floral



54 in Broadcloth
White/Turq floral



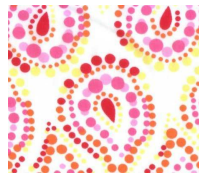
54 in Pique'
Polka Dot Stripe



54 in Pink
Sunflowers



54 inch Pink/Orange
Paisley



They have found another bolt of this wonderful fabric!

***My supplier has found another bolt of the beautiful 54 inch wide batiste. It is a wonderful fabric with the sheen and hand of Swiss. Still only \$8.00 / yard

Linen - All Linens are \$14.00 /yd

45 in Peach
Handkerchief



45 in Soft White
Handkerchief



54 in Floral
Pinks



New for fall! Grey and Red Plaid. This is a 60 inch wide blend, perfect for jumpers, rompers, and Brother/Sister outfits! **\$10.00 /yd**

Finally, I have a chance to get some [Hawaiian board short-type fabric](#) (blues, reds, ect., 100% poly microfiber). 60 inches wide, \$9 / yd. This is not my usual type of fabric, but it is such a good deal that if anyone is interested, I pick some up if they still have it the next time I am down there. Please let me know!

It Doesn't Fit!

Why a 2 is a 4 is a 12 – the inconsistencies of sizing.

As I have become more involved in my pattern making venture, I have learned more (to my horror) about sizing in both Ready to Wear (RTW) and commercial pattern making. When I am shopping, no matter where I go, nothing seems to fit the same. A size 2 in one store is a size 4 in another, and a size 6 in another. In shirts, I can wear anything from an XS to a Medium! If I buy a commercial pattern (Simplicity, McCall's, etc.), I have to buy a 10 or a 12, which to me sounds absolutely huge, and yet it fits? Why doesn't everyone have standard measurements for women's clothes?!

In commercial patterns, a set of standard measurements are used. Size ranges should be categorized by size – misses (more of an hour glass figure) or womens (these sizes have a bigger waist measurement than the misses size). Unfortunately, often, the only difference in misses and womens is that the measurements get larger without changing the measurement ratio. For the misses size, several (thousands?) if women are measured and the measurements are averaged out to give a standard set of measurements for each size. Most of the commercial pattern sizes are close to each other, but vary greatly from RTW.

For RTW, in a nutshell, it is \$\$\$\$\$. It is a well documented fact that women will pay more money for clothes that are a smaller size. For example, if you take 2 identical pants and remove the labels and re-label one with a size 6 and price it at \$100 and the second as a size 10 and price it at \$75, most women will pick the size 6. This size 'deflation' is one of the reasons for the differences in sizing.

Another reason is 'fit'. Each designer comes up with their own standard measurements for their size table. These measurements are their trade secret! They want their clothes to fit and fit well. Shoppers will invest in clothes that fit them well and will check that label first when they shop again. When you are looking for clothes, you want to look for how things fit you. Don't be so picky about the

size, and be sure to try several different designers. A \$!5 pair of jeans from Kmart can make you look better than a \$200 pair of Lucky Brand jeans if the Kmart jeans are made to fit your figure and the Luck jeans aren't. Don't be afraid to experiment with different designers and shops to help you find the clothes that fit your figure!

Well, that is all for now – hope to see you all soon! Coming next issue – silk floss!
Happy Stitching,

Vaune

P.S. My new patterns should ship out in the next couple of weeks!



Size chart for Misses Evening Elegance

Misses	A	B	C	D	E	F	G	H	I	J	K
Bust	32.5"	33.5"	34.5"	35.5"	36.5"	38"	39.5"	41"	43"	45"	47"
Waist	24"	25"	26"	27"	28"	29.5"	31"	32.5"	34.5"	36.5"	38.5"
Ctr Frnt	14"	14.25"	14.5"	14.75"	15"	15.25"	15.5"	15.75"	16"	16.25"	16.5"

Size Chart for Women's Evening Elegance

Womans	A	B	C	D	E	F	G	H
Bust	32.5"	34"	35.5"	37.5"	40"	43"	46"	49"
Waist	28"	29.5"	31"	33"	35.5"	39"	42.5"	46"
Cent Frnt	13.75"	14.25"	14.75"	15.25"	15.75"	16.25"	16.75"	17.25"